



EMR Data, MIIC, & the Process of Merging Records

Naomi Jiter & Miriam Muscoplat | MIIC Operations, MDH

Learning Objectives

1

Understand how fragmented immunization records occur

2

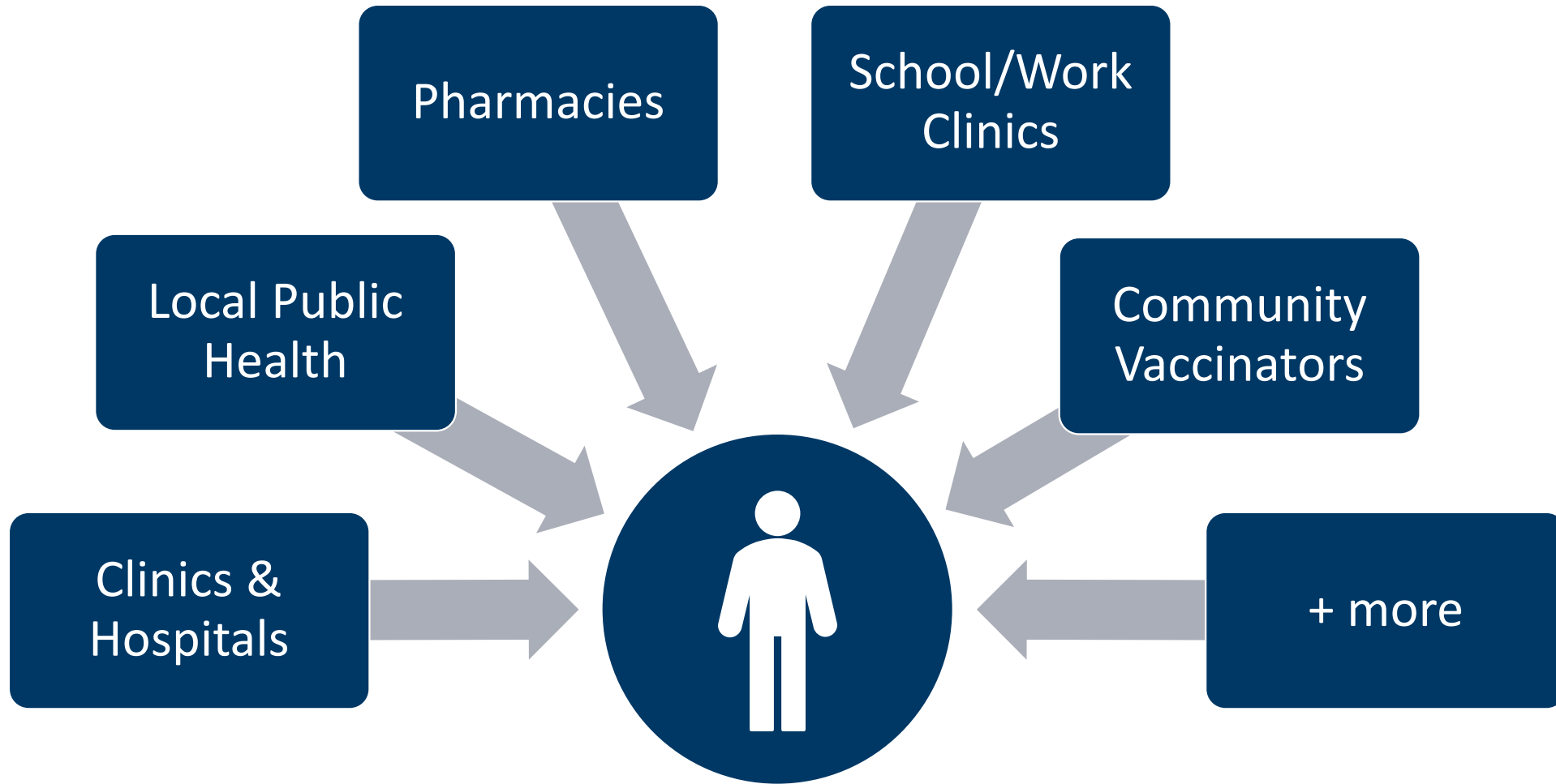
Describe the process & importance of merging immunization records in MIIC

3

Be aware of common issues & barriers to reconciliation & record completeness

Fragmented Records

Multiple Providers



Changing Demographics

Residence

- Moving within or out of state



Names

- Formal name changes
- Partial names
- Using nicknames



The Problem



Clients must keep track of multiple records



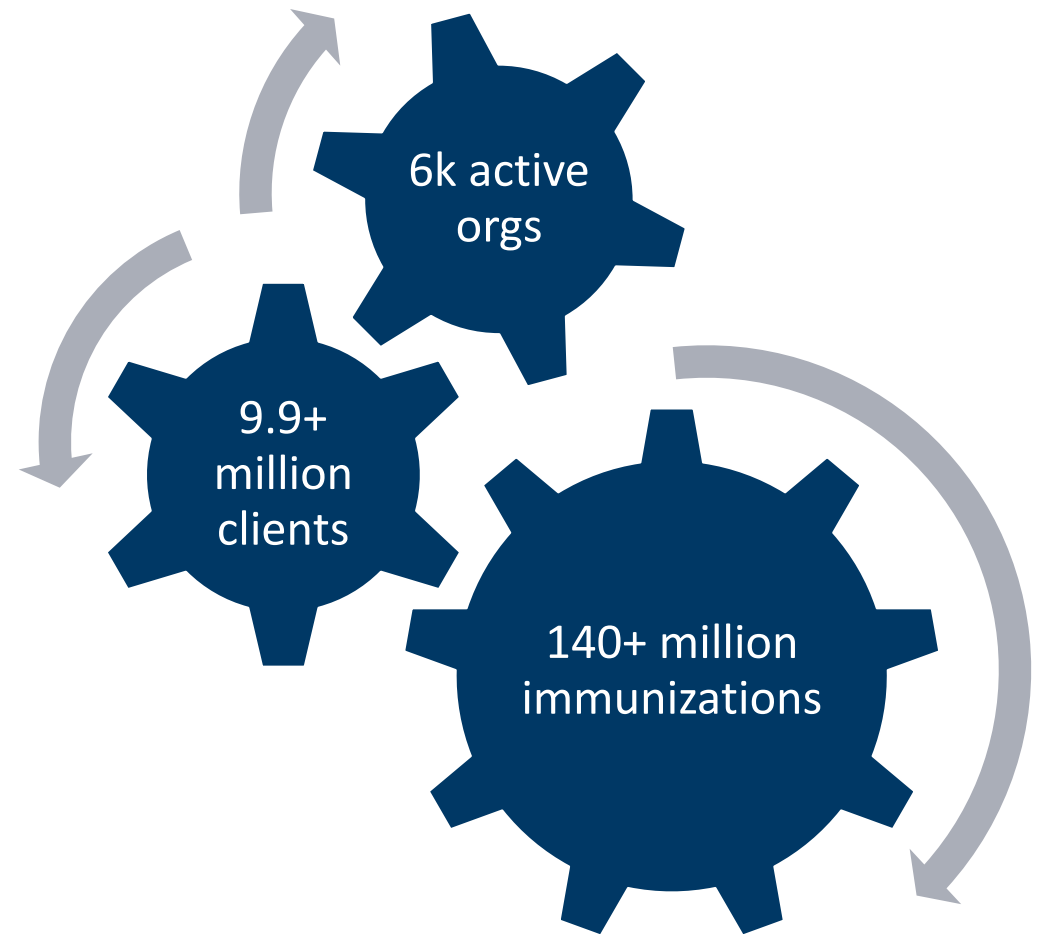
Missing records for school, work, childcare, etc.



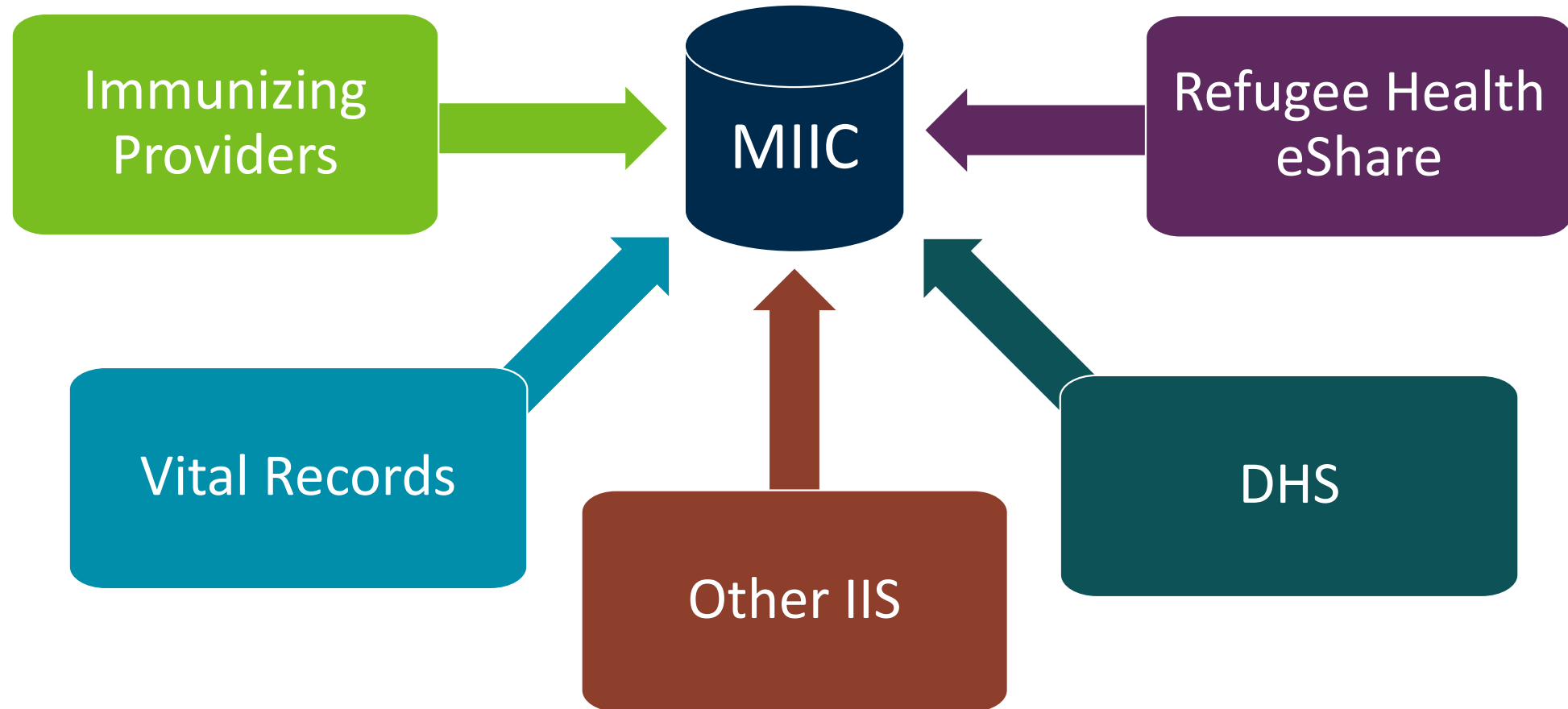
Unnecessary or missed vaccinations

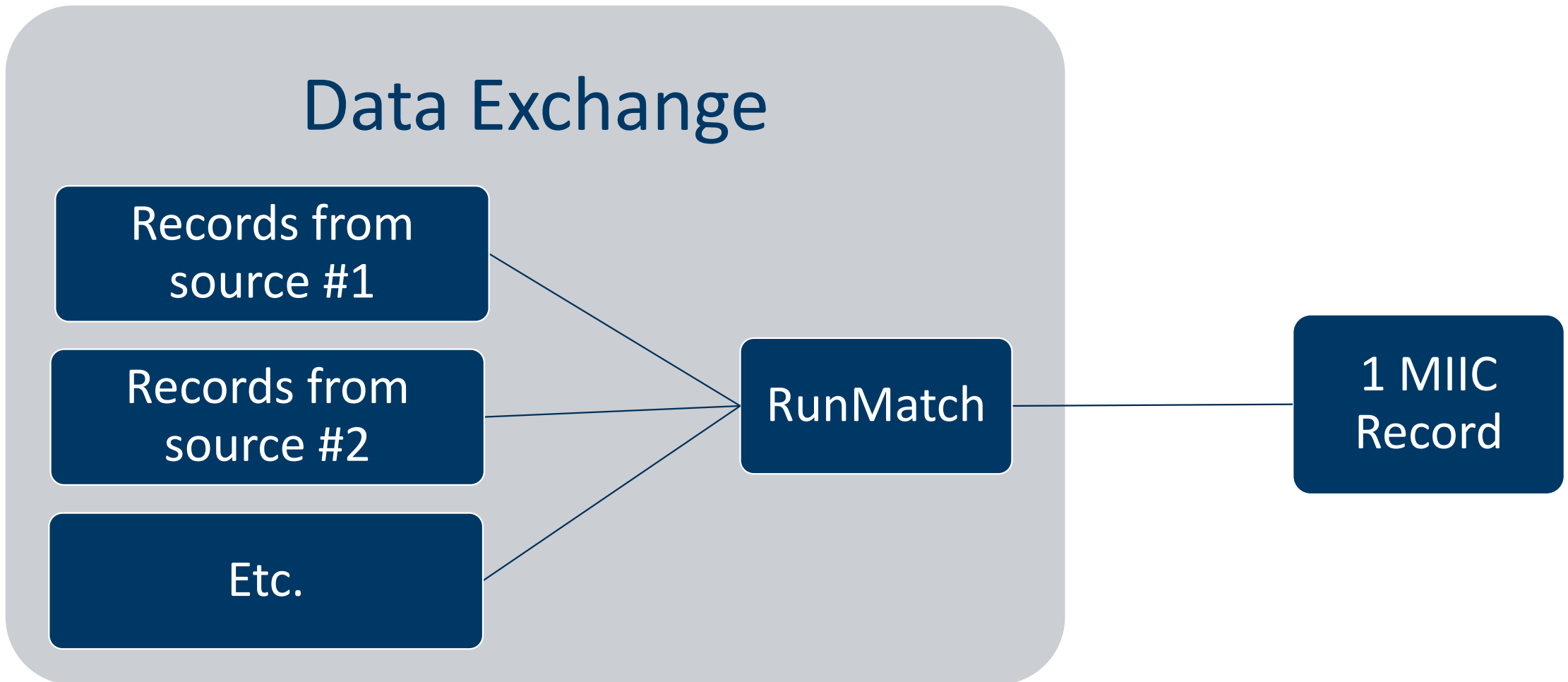
Minnesota Immunization Information Connection (MIIC)

- Minnesota's statewide immunization information system (IIS)
- Established 2002
- Stores electronic immunization records, combining information onto a single record even when received from different sources
- Most MN providers participate & only pharmacies are required to submit data



Data Sources





Matching Issues

- Pending client queue
 - Due to MIIC finding 2+ possible matches for incoming updates
 - MIIC Ops regularly reviews & merges/unpends
- Duplicate records
 - Usually due to & persist because of:

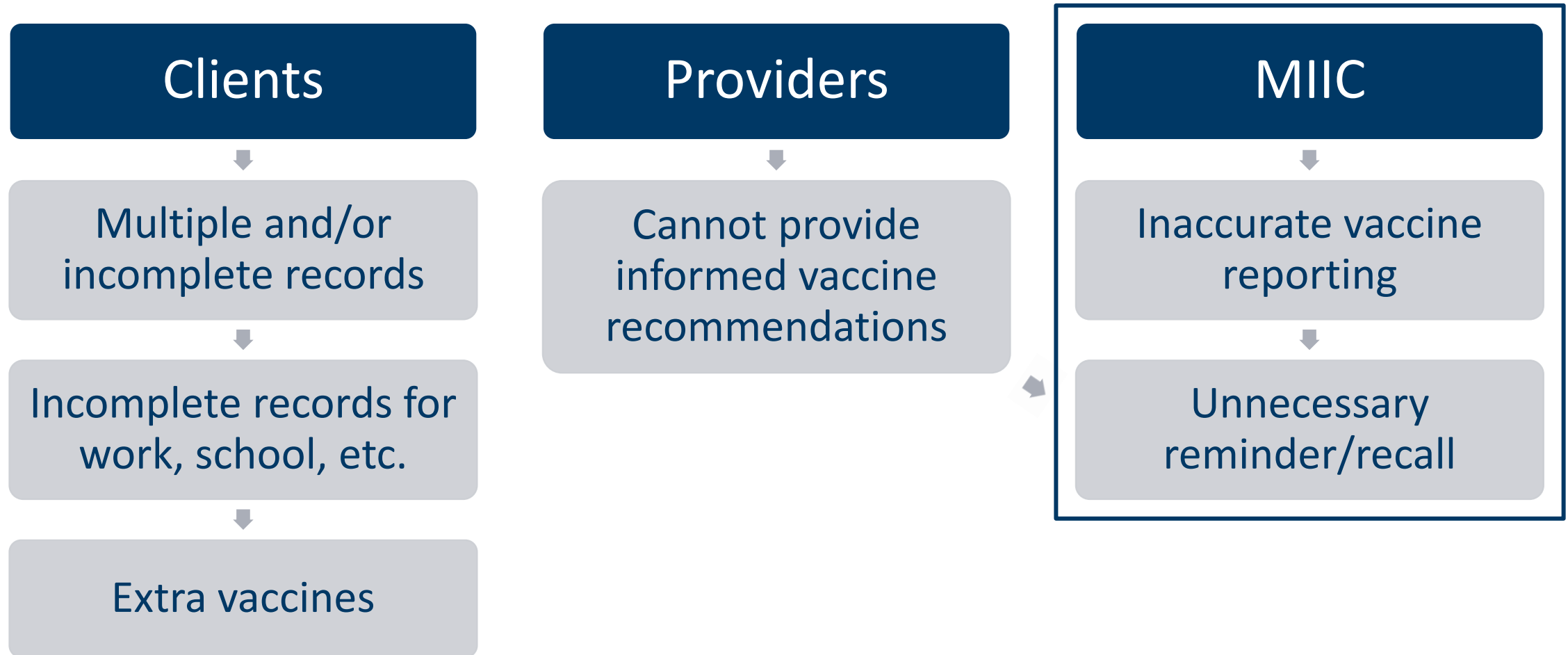
Outdated
information

Missing/
incomplete
demographics

Data entry
errors

Common
names/DOBs

The Problem cont'd



What Can We Do

Merge Existing Duplicates

- MIIC Ops Team continues to monitor & clean fragmented records:
 - Pending clients
 - Data Quality projects
- When you encounter duplicate records:
 - Send the MIIC IDs to the MIIC Help Desk (health.miichelp@state.mn.us)

Remember! MIIC is a statewide database – we have many clients with similar names/DOBs and your patient might have multiple potential matches in MIIC, that should not all be merged or reconciled in your EHR.



Update all demographic information



Enter complete client records

- Middle names & mother's names can prevent mis-merging
- Empty records are very difficult to locate & match



Enter accurate & complete vaccination records

Thank you!

Naomi Jiter & Miriam Muscoplat